

Alyamitech Brochure 2025



"Premium and quick solutions with value engineering"



ALI MANEA ALYAMI TRADING EST
Dammam, Saudi Arabia Phone: +966 560466106
Email: info@alyamitech.com Web: www.alyamitech.com



ABOUT ALYAMITECH



Ali Manea Alyami Trading Est.

Ali Manea Alyami Trading Est. (Alyamitech) is a Saudi Arabian distributor specializing in HVAC products, valves, gauges, MEP tags, and industrial instrumentation. Founded in 2017 and based in Dammam, we supply products to projects across multiple sectors, including oil & gas, petrochemicals, and construction. Our commitment to quality, reliability, and customer-centric service has established us as a trusted partner in the Kingdom.

We work with premium industrial products brands like Winters Instruments, Flamco Netherlands, Envotec, Ariston, Mifab USA, VIMCO. We also supply pumps and pump accessories from Industry standard products from Grundfos and Wilo in Saudi Arabia. From expansion vessels to valves and air curtains, we supply industrial products to commercial, residential and industrial projects in Saudi Arabia.



Why Choose Us

We combine dedicated service, proven expertise, and a customer-focused approach across multiple industries. Our commitment to delivering quality products and forging enduring partnerships positions us as a preferred procurement partner.

What we offer:

- Over 15 years of market experience
- Strong supplier relationships
- Prompt and reliable delivery
- Dedicated after-sales services



Certifications & Accreditations

We are accredited with ISO 45001:2018 certification, showcasing our unwavering dedication to safety, quality, and compliance, reinforcing our status as a reliable industry supplier.

Additional Details:

- ISO 45001:2018 certification
- ARAMCO VENDOR ID: 10067450



Thank You

FOR YOUR SUPPORT

Your continued support and trust in our services fuel our commitment to excellence. Gratitude & appreciation for being a vital part of our journey.

- Team Alyamitech

TABLE OF CONTENT



<i>Pressure Gauges & Instruments</i>	5
<i>Air & Dirt Separators, Expansion Vessels</i>	7
<i>Maplef Valves</i>	8
<i>FCU & PICV</i>	9
<i>Actuators & Butterfly Valves</i>	10
<i>Float Valves</i>	11
<i>Flexible Connectors & Flanges</i>	13
<i>PRV</i>	14
<i>Flow Meters & Interceptors</i>	15
<i>Plumbing & Drainage Products</i>	18
<i>Pumps</i>	19
<i>Vibration & Noise Control Products</i>	22
<i>Penstocks</i>	24
<i>Air Curtains & Heat Exchangers</i>	25
<i>MEP Tags & Signs</i>	26
<i>Water Heaters</i>	27
<i>Completed Projects</i>	28

OUR RANGE OF PRODUCT BRANDS



Winters Instruments

Alyamitech is official distributor of Winters Instruments products in Saudi Arabia. Winters Instruments offers a range of precision gauges and thermometers, including the PFQ Glycerin Filled Gauge and PTR Tamper-resistant Gauges. These products ensure accurate readings and durability in industrial settings.

Winters' thermometers such as the TAG HVAC and TIM Series, along with TIW Industrial Thermowells, provide reliable temperature measurement solutions for various applications.



PFQ Glycerin Filled Gauge



PTR Tamper-resistant Gauges



Industrial Thermometers



TAG HVAC Thermometers



TIM Series Thermometers



TIW Industrial Thermowells

Instrument Calibration Services

Alyamitech provides Instruments Calibration Services in range of products such as pressure instruments, temperature instruments, electrical instruments and gas monitors. With ISO 17025 accreditation, state-of-the-art equipment, experienced staff, and competitive pricing, customers can rely on accurate and reliable calibration.

Calibration Services:

- Pressure Instruments
- Temperature Instruments
- Electrical Instruments
- Gas Monitors



PRESSURE TRANSMITTER & FLOW METERS

Winters Instruments

Winters Instruments provides Explosion Proof differential pressure transmitters, including the WINSMART LY36, LY34 LY14 models. These highly reliable devices ensure precise pressure monitoring.

Flow solutions feature the FUS Ultrasonic Flow Meter and WUH Ultrasonic BTU Meter, complemented by indoor temperature sensors and control accessories.



WINSMART Pressure Transmitters



Explosion-proof Pressure Transmitter



LY36 Pressure Transmitter



LY34 Differential Pressure Transmitter

Flow Meters & BTU Meters



FUS Ultrasonic Flow meter



WUH Ultrasonic BTU Meter



Ultrasonic BTU Meter



Indoor Temperature Sensor Control



SNV Needle Valve



SSP Syphon

Flamco

Alyamitech is largest stockist and distributors for Flamco products in Saudi Arabia. Flamco Group offers products in system components for heating, cooling and potable water installations as well as fixing technologies.

These includes expansion vessels, air separators, dirt separators, dosing pots, degassers, dearators, PRV and safety valves.



Expansion Vessels



Flexcon M Expansion Vessels



Expansion Automat Vessels



Automatic Air Vents

Pressurization Products



Pumpless Pressurization Unit



Smart Combined Separator



Prescor Safety Valves



Flextronic Double Pump Control Unit



PSD Degasser



Digital Pressurisation Unit

Maplef

Maplef General Supplier is flow control device manufacturer based in Canada. It makes valves included, gate valves, Strainers, Check Valves, Butterfly valves, Brass Angle Valves, Suction Diffusers, Flexible Connectors, Flanges, Fittings and Accessories.

Maplef makes bronze, ductile iron, cast iron based valves for diverse set of industrial applications in wide range of sizes and standards.



Bronze Check Valve



Bronze Gate Valve



Y-Strainer



Ductile Iron Butterfly Valve



Cast Iron Gate Valve



Ductile Iron Suction Diffuser



Bibcock with Hose Union



Brass Draining Cock

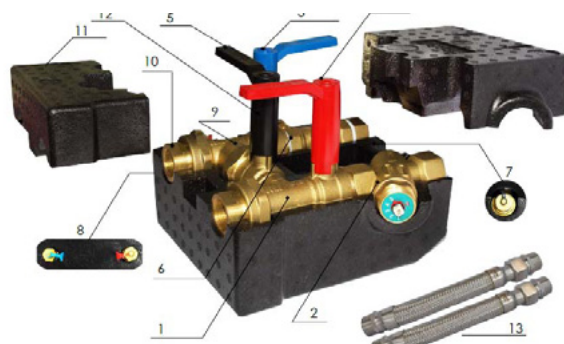


Angle Valve

Maplef

Connect FCU PN25 offers ready-to-install, factory-tested valves with a removable insulation kit. Features include 2 P/T test points, full insulation, stainless steel flexible hoses, and three full port isolation ball valves for supply, return, and bypass.

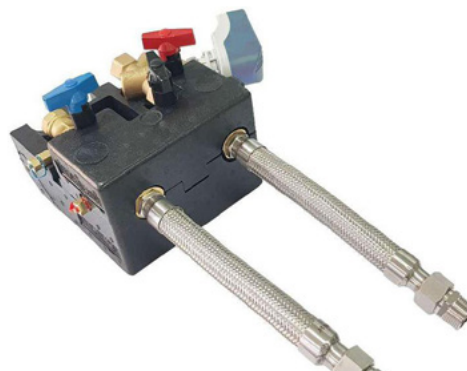
Maplef PICV provides pressure-independent control valves with options for digital or analog input signals, available in sizes 15-40 mm.



Connect FCU PN25

FEATURES

- It is a ready to install PN25 rated factory pre-assembled and tested valves supplied along with a removable insulation kit.
- 2 P/T Test Point - Full Insulation
- 2 Stainless Steel Flexible hoses for connections to FCU
- 3 full port Isolation Ball Valves with extended handles for allowances of insulation (1 for supply, 1 for return & 1 for by-pass)
- For control of flow, there are options available
- Maplef PICVs or Two Way Control Valves with On/Off+ Double Regulating Valves or Modulating thermic or Mechanical actuators



Material Specification & Dimensions

DN	INCH	L	W	H
15	1/2"	197	211	117
20	3/4"	212.5	233.5	130
25	1"	237	261.5	135.5



Connect FCU PN25

Pressure Independent Control Valves

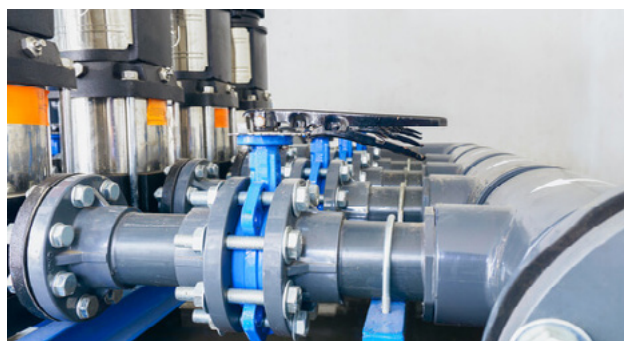
Available as Maplef Green.0 / Green.1 / Green.2 in size 15-40 mm / 1/2"-1 1/2". The Maplef Green series is a range of pressure independent control valves that are two-way, modulating to accept digital or analog input signals. The valves accept 0(2)-10V, 3-point floating or ON/OFF input signals.



Envotec

Envotec Butterfly Valves include EMD-W Wafer, EMD-L Full Lug, and EMD-F Flanged types, suitable for potable water, HVAC, and irrigation. These valves offer tight shut-off with low pressure drop and are ideal for automation with low operating torque.

EOHQ Series Actuators provide precise control for rotary quarter-turn valves, featuring a compact design, manual override, and auxiliary limit switches for enhanced functionality.



Butterfly Valves

Envotec Butterfly Valves are available in EMD-W Series Wafer type, EMD-L Full Lug type, EMD-F Flanged type of Butterfly valves.

Its suitable for potable water, HVAC, irrigation in residential, commercial and industrial applications.

Features:

- Tight shut off with Low pressure drop
- Suitable for automation with low operating torque and 90 degree operating angle
- On-off or throttling applications



Full Lug Butterfly Valve



Wafer Butterfly Valve



Flanged Butterfly Valve



Electric Actuating Butterfly Valve

On/Off Type Actuators

Envotec offer EOHQ Series Quarter Turn Electric Actuators. The actuators can deliver 50 Nm torque to 2000Nm in a fast and smooth operation. The indicator provides a clear visual inspection of the valve position. The actuator features a manual override and auxiliary limit switches for control purposes.

Features:

- Compact due to high grade aluminum alloy housing.
- The actuator motor is reversible, high torque and low current design.
- Solid with o-ring for weatherproof.

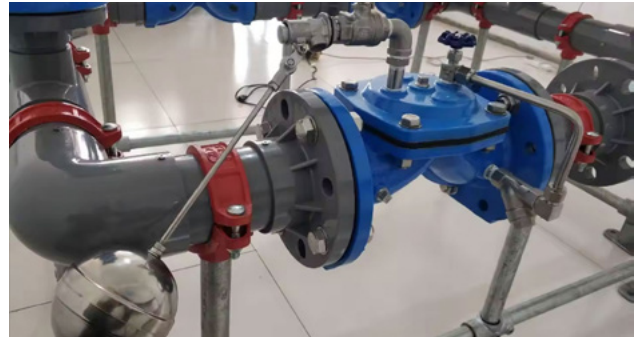


On/Off Type EOHQ Series Actuator

Envotec

Envotec Pressure Reducing Valves include models with built-in strainers and ductile iron flanged foot valves, ensuring efficient pressure management. These valves are designed for durability and reliability in various applications.

Float Valves include options like modulating float control valves and automatic float valves. Available in sizes from 3/8" to 1", they provide balanced single-seat designs for precise liquid level control.



Pressure Reducing Valves



Pressure Reducing
Control Valve



Modulating Float
Control Valve



Solenoid ON/OFF
Control Valve

Float Valves



Ductile Iron Flanged Foot Valves



Equilibrium Float Valves



PRV with Built-In Strainer



Ball Float Valve
W/ Balanced Single Seat



3/8" to 1" Float Valves



Automatic Float Valve

Maplef

Maplef Expansion Joints feature flanged single sphere rubber bellows and threaded double sphere rubber bellows, designed to minimize vibration and noise.

Flexible Connectors from Maplef include stainless steel hoses with DZR brass or SS304 couplings, and flanged single sphere rubber with control rods. These connectors provide reliable solutions for accommodating thermal expansion and contraction in piping systems.



Expansion Joints

Maplef offers Flanged Single Sphere Rubber Bellows, Stainless Steel Flexible Hose with Threaded DZR Brass Coupling, Stainless Steel Flexible Hose with Threaded SS304 Coupling, Flanged Single Sphere Rubber with Control Rods, Flanged Single Sphere Rubber with Control Rods type of Flexible Connectors.

These are available in different sizes suitable for specified pressure ratings. Flexible Hoses are available in PN16 and PN25 ratings.



Flanged Single Sphere Rubber Bellow



SS Flexible Hose With
DZR Coupling



Stainless Steel Flexible
connector



Braided SS
Flexible Connector



Flanged Single Sphere
With Control Rods



Threaded Double Sphere
Rubber Bellow

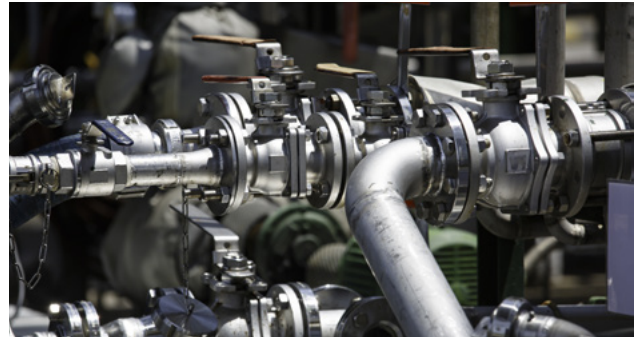


SS Flexible Hose With
Threaded Coupling

Envotec

Flanges include stainless steel weld neck flanges and dielectric flange pipe fittings, designed for robust and secure connections in piping systems. The EPF Puddle Flange ensures effective sealing and protection against water ingress.

Air Vents from Envotec feature air and vacuum valves and automatic air vents, providing efficient air release and system protection. These components are essential for maintaining optimal performance and preventing air-related issues in fluid systems.



Air & Vacuum Valve



Automatic Air Vent



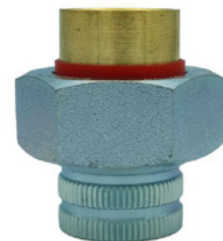
Direct Acting Type PRV



Double Sphere Flanged
Rubber Expansion Joint



Single Sphere Flanged
Rubber Expansion Joint

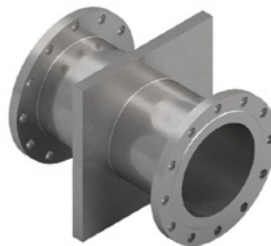


Dielectric Unions Duff

Flanges & Fittings



Dielectric Flange
Pipe Fittings E300



EPF Puddle Flange



Stainless Steel (WNRF)
Weld Neck Flange

Pressure Relief Valves

Maplef MV80-120 is a Bronze PRV with Rating PN20 and Connections BS EN 10226-2 Taper Threaded (ex BS21). It supports working medium such as water, oil and Steam.

Wellmark offers W2601 and W2602 Threaded Safety Relief Valves. These valves are for general purpose gas and air services, and are recommended for over-pressure protection on separators, compressors, pressure vessels, heater-treaters, gathering and transmission lines.



Maplef MV80-120



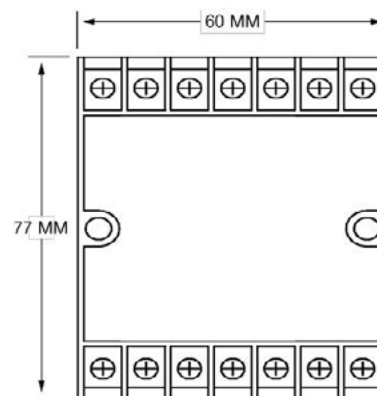
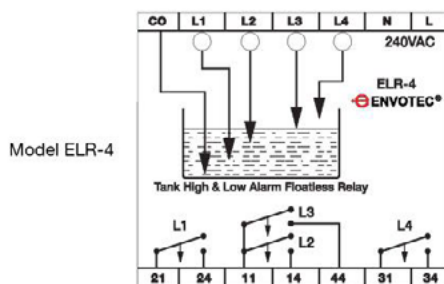
Wellmark W2601/W2602

Electronic Level Relay

The ELR is an electronic level relay used to sound alarms when the level of a conducting liquid reaches an upper or lower limit by using series of probes. This electronic relay can also be sequenced at liquid levels in the reservoirs as 25%, 50%, 75% and 100%. This relay can also configured with pumps, solenoid valves, motorized control valves and similar systems.

Applications:

This electronic level relay mounted in control panel with required terminals configured to applications to suit project requirements.



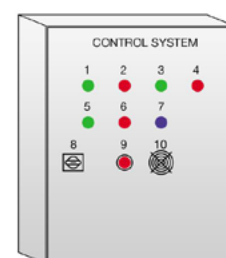
Level Sensing Electrodes

Envotec ELR Series Level Sensing Electrodes are designed for use with all Envotec Level Control Relays. They are available as single electrode or with Level Control Relay.

Its available in mounting type Free-Connection via M3 Screw terminal and Electrodes are made from Stainless Steel 316.



EP01 Level Sensing Electrodes



Water Tank Level Monitoring System

Envotec

Envotec Water Meters include domestic models, multi-jet dry type vane wheel, and Woltman turbine meters, providing accurate water measurement for various applications. These meters ensure reliable performance and efficiency in monitoring water usage.

Envotec Interceptors feature sand-mud and Eio oil interceptors, designed for effective separation and filtration. Additional components like pressure drop activated trap seal primers and water hammer arrestors enhance system protection and stability.



Water Meters



Domestic WaterMeter

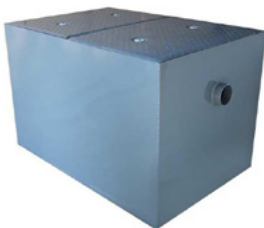


Multi-Jet Dry Type Vane Wheel Water Meter



Woltman (Turbine) Water Meters

Interceptors



Sand-Mud Interceptor



Oil Interceptor



Pressure Drop Activated Trap Seal Primer



SS Brass Body Vacuum Breaker



Triage - Piston Type Water Hammer Arrestor



Sealtech Surgetrol SS Bellows WHA

Envotec

Envotec Flow Meters offer a range of solutions, including ultrasonic flowmeters, electromagnetic flow meters, and gas turbine flow meters. These devices ensure precise measurement of liquid and gas flow in various industrial applications.

BTU Meters feature ultrasonic heat meters for accurate energy measurement. Additional options like Coriolis mass flow meters, vortex flow meters, including insertion type, provide versatile and reliable performance for diverse fluid monitoring needs.



BTU Meter - Ultrasonic Heat Meter



Handheld Ultrasonic Flowmeter



Wall Mounted Ultrasonic Flowmeter



Electromagnetic Flow Meter



Ultrasonic Water Meter



Gas Turbine Flow Meter



Coriolis Mass Flow Meter



Liquid, Gas Vortex Flow Meter



Insertion Type Vortex Flow Meter

Mifab

Mifab Electronic Trap Seal Primer ensures equal water distribution to all ports, preventing sewer gas entry from unused drains. Mifab Self Cleaning Interceptor is crafted from high-density polyethylene, offering a lightweight, corrosion-free design with a lifetime warranty.

The BIG-1150-SC model includes a 100 GPM flow rating, 750-gallon capacity, and seamless construction for efficient grease separation.



Mifab Self Cleaning Interceptor

Mifab High-Density Polyethylene Separator has a low weight – compact design, 100 % corrosion free with a limited lifetime warranty and is made in the USA out of seamless, rotationally molded High-Density Polyethylene with 9.5mm uniform wall thickness.

Specification:

MIFAB® BIG-1150-SC HDPE rotational molded grease interceptor with flow rating of 100 GPM and liquid holding capacity of 750 gallons. Unit shall include: 3/8" uniform wall thickness, deep seal trap covered by lid, internal air relief by-pass and 4" no hub inlet and outlet connections.



Envotec Automatic Grease Interceptor

The Envotec automatic grease separator made of high quality plastic High density/Low medium density polyethylene meets the requirements of DIN EN 1825 and DIN 4040-100, which are resistant to acids.

Featuring a one piece design with integrated sludge trap, the separator is suitable for free standing installation. Stability over 20 years has been verified, inlet and outlet connections meet DIN EN 877 and DIN 19535 requirements.



Mifab MI-100 Electronic Trap Seal Primer

Mifab MI-100 is engineered for equal distribution of water to all ports. It's the perfect solution to keep sewer gas from entering the building from seldom used floor drains.

The MI-100 can be located anywhere in the water supply and is engineered to permit the building owner to adjust the frequency and amount of water delivery through a timer and stainless steel solenoid valve.



Mifab

Mifab Plumbing & Drainage Products feature the BIG MAX HDPE oil interceptor and SUPER MAX grease interceptor, designed for efficient waste separation. The F100 round adjustable floor drain with flange and large sump roof drain ensure effective water management.

Drainage products include a 4" internal width concrete channel, angle pit drain with backwater valve, and Barracuda 20 double check valve backflow preventer.



BIG MAX HDPE
Oil Interceptor



SUPER-1000 SUPER MAX
Grease Interceptor



F100 Round Adjustable
Floor Drain with Flange



Large Sump Roof Drain



4" Internal Width Concrete Channel



Angle Pit Drain with
Backwater Valve



Barracuda 20 Double Check
Valve Backflow Preventer



M-500 Pressure Drop
Trap Seal Primer



Rough Brass Vacuum Breaker

Grundfos

Grundfos Pumps provide versatile solutions with circulator pumps, pump booster sets, and immersible pumps for efficient fluid handling. Submersible wastewater pumps and inline single and multi-stage pumps ensure reliable performance across various applications.

Advanced Pumping Solutions include end-suction close coupled multistage, horizontal multistage, and horizontal split case pumps, offering optimal flow and pressure management for industrial and commercial needs.



Residential & Commercial Pumps



Circulator Pumps



Pump Booster Set



High Flow Circulator Pumps



Horizontal Multi-stage Pumps



Inline Single Stage Pumps



Horizontal Split Case Pumps



Submersible Wastewater Pumps



Submersible Groundwater Pumps



Immersible Pumps

PACKAGED PUMP SKIDS



Grundfos

Packaged Pump Skid systems offer a streamlined solution for fluid management, integrating Grundfos Pumps, Envotec Control Panels, and robust Skid Frames with customizable valves and accessories. With various specifications and flow rate capacities, these systems are adaptable for diverse industrial needs.

The integration of VFD and BMS configurations ensures efficient operation, while the flexibility of components from Grundfos and Envotec guarantees a tailored fit for any setup.



Wilo

Wilo Pumps deliver efficient fluid handling with high-efficiency multi-stage, inline centrifugal circulation, and base-mounted end suction pumps. These solutions are designed for optimal performance in industrial and commercial applications.

Packaged Skid Pumps combine Wilo Pumps with Envotec control panels and skid frames, offering customizable valves and accessories. They ensure efficient operation with VFD and BMS configurations, adaptable to diverse industrial needs.



Residential & Commercial Pumps

Wilo manufactures specialized pumps featuring robust construction with high-grade materials, offering advanced features like cartridge seals for easy maintenance and integrated electronic controls, while ensuring optimal performance and energy efficiency across various industrial and commercial applications.



High Efficiency Multi-stage Pump



Inline Centrifugal Circulation Pump



Base Mounted End Suction Pump

Fire Pumps



LIFECHO UK offers a range of fire pump products, including end suction, split case, and jockey fire pumps. These pumps are engineered for reliability and efficiency, ensuring robust performance in critical fire protection systems across industrial and commercial applications.



Split Case Fire Pump



End Suction Fire Pumps



Jockey Fire Pumps

Vimco USA

VIMCO USA is Vibration Management Company in Houston, Texas specializing in making vibration and noise control equipments for industrial companies around the world.

The product range include vibration isolators pads, restrained spring mounts, free standing mounts, rubber isolators, expansion joints and more.



Sprint Mounts



Rubber-in-shear Double Deflection Hanger



Vimco Housed Spring Mount



Seismic Spring Mount-1 Deflection



inertial base for pumps



80LB Free Standing Spring Mounts



HNSA Neo-Spring Hanger



AVHM Anti-vibration Hanger Mount



Vibro-Sorb Flexible Duct Connector

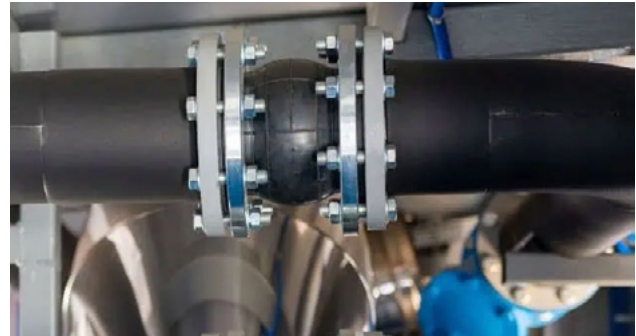


VTPT-02 Test Plug

Vimco USA

Vimco Rubber Mounting Pads range of products include Green Tri-ple-Core Rubber Foam Pad and Easy-Cut Rubber Mounting Pad for effective vibration isolation and durability. These pads are resistant to oil, water, and ozone.

Expansion Joints include FCS Rubber and JF-500-T Stainless Steel options, with flange or screwed connections, accommodating thermal expansion and contraction in piping systems.



Expansion Joints



FCS Rubber
Expansion Joints



Expansion Joints, Twin
Bellow, Flange Connection



Rubber Expansion Joints, Screwed
Connection

Rubber Mounting Pads



Green Tri-ple-Core
Rubber Foam Pad



FMD Rubber-In-Shear
Mount



Steel Rubber
Mounting Pad



Easy-Cut Rub-
ber Mounting Pad



CRU Control Rod
Unit



JF-500-T SS
Expansion Joints

Envotec

Envotec Penstock, meticulously crafted with a rolled steel frame, features a door with stem nut or extension rod suspension. Boasting slide rails, Profile Seals, and a Bottom Seal, it's adaptable to project-specific requirements.

Following BS7775, Four Sides Sealing standards, this piece of equipment thrives in waterways, power plants, and industrial effluent plants.



Stainless Steel Penstocks

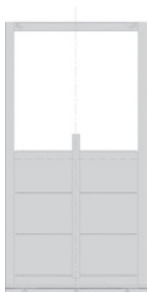
Envotec EPENX Series Penstocks are available in Square Penstock, Weir Penstock, Channel Penstock, Weir Type Channel Penstock. Envotec also offers Handstops, Flap Valves, Titling Weir, Titling Flushing Valve and stoplog as well.

Features:

- Fabricated frame of rolled steel sections
- Door with suspension for stem nut or extension rod
- Slide rails, Profile Seals and Bottom Seal
- Designed to suit project specific requirements



EPENX Series Penstocks



Square Type Penstock



Weir Type Channel Penstock



Flap Valves

Centrifugal Motor Air Curtains

Alyamitech offers Centrifugal Motor Air Curtain, a powerful solution for air control, with dimensions ranging from 900x230x210mm to 2000x230x210mm. Operating at power levels from 360W (2 motors) to 840W (4 motors), it delivers an air volume up to 3500 cubic meters per hour.

Features:

- SIZE (mm): 900x230x210 to 2000x230x210
 POWER (w): 360w with 2 motors - 840w with 4 motors
 AIR VOLUME: 1500 m3/h - 3500 m3/h
 AIR SPEED: 17m/s



VTS

VTS Air Curtains feature the WING PRO Industrial models with energy-efficient EC motors, reducing electrical use by 40% and supporting BMS connections. They offer flexible installation and a wide air stream reaching up to 8 meters.

VTS WING W Air Curtains deliver heating power from 4 to 47 kW, with models like W100W and W200W providing air coverage up to 3.7 meters.



VTS WING PRO Industrial Air Curtains

Features:

- Energy Savings: EC motor use even 40% less electrical energy and allow for BMS direct connection.
- Power: Wide air stream, reaches up to 8 meters away from the air curtain.
- Installation: Vertical or horizontal mounting possibility plus easy unit connection.



VTS WING W Air Curtains

Features:

- Heating Power Range: 4 – 47 kW
- Exhaust Power Rate: 1850-4400 m³ /h
- Maximum Air Coverage: 3.7m
- Products: Available in Wing W100W, W150W, W200W Models



Maxwor Heat Exchangers

MAXWOR

Maxwor is different types of heat exchangers like Gasketed Plate Heat Exchangers, Braze Plate Heat Exchangers, Shell & Tube Heat Exchangers and Finned Tube Heat Exchangers. They also make rubber, metal and fabric expansion joints. Metal expansion joints include AN Type Expansion Joint, AX Type Expansion Joint and LA Type Expansion Joint.



Braze Plate Heat Exchangers



Gasketed Plate Heat Exchangers



Finned Tube Heat Exchangers

3M

In MEP installations, Color Banding Tapes, Flow Directional Tapes, Underground Warning Tapes are used. Tags like Valve & Equipment Tags, Engraved Tags are also used for identification and safety of equipment and personal.

For Identification Signs, Stainless Steel Signs, Enameled Aluminum Signs, Engraved Plastic Signs, Photo luminescent Signs, Safety Signs and Fence Signs are used.



MEP Color Tapes



MEP flow directional tapes



Color Banding Tapes



Underground Warning Tapes

Valve & Equipment Tags



Engraved Plastic
Valve Tags



Engraved Plastic
Equipment Tags



Stainless Steel Tags

Road Signs & Safety Signs



Accident Prevention Tags



Photoluminescent Signs



Equipment Signs

Ariston

Ariston Electric Water Heaters provide efficient and reliable hot water solutions for commercial and residential projects, featuring advanced energy-saving technologies and easy installation.

Ariston Solar Water Heaters utilize renewable energy for sustainable hot water supply, ideal for eco-friendly projects. They offer high efficiency, reduced energy costs, and minimal environmental impact, making them suitable for various applications.



Electric Water Heaters



Wall Mounted Water Heater



Electric Storage Water Heater



Commercial Water Heater

Solar Water Heaters



Ariston Solar Water Heater



Ariston Domestic Water Heater



RUDD Solar Water Heater



RUDD residential electric water heater



RUDD tankless electric water heater



RUDD commercial water heaters

COMPLETED PROJECTS



Iconic Station 3B2

Product Supplied: Winters Instruments Gauges



Riyadh Metro Stations 1A1,1F8,1C1,1B3

Product Supplied: Winters Instruments Gauges & AGF Valves



Dallah Hospital

Product Supplied: Vimco Vibration Isolators & Winters Instruments Gauges



COMPLETED PROJECTS



Arar Airport

Product Supplied: Winters Instruments Pressure Gauges



Granada Mall Riyadh

Product Supplied: Winters Instruments Gauges



Saudi Electricity Company Headquarters

Product Supplied: Winters Instruments Gauges



Services

Alyamitech Team undertakes BMS projects and we have qualified engineers to implement the projects. We can also install, test, calibrate and commission all the materials we sell and through this service we provide Premium and Quick solutions.

Heating, Ventilation, and Air Conditioning (HVAC) are technology products important for the climate control of indoor environment. HVAC solutions are utilized in industrial plants, residential units, vehicles, industrial equipment and many more application. HVAC installation, testing and usage have to be done through following adequate guidelines provided by the manufacturers. Certification and calibration needs to be checked ensure the quality of instruments and equipment adhere to ISO and other quality certifications.



ISO Certified Products

Alyamitech strives to provide ISO and industry standard certified products for our customers. Winters Instruments company has ISO 9001:2008 Certification for provision of Industrial instrumentation for the measurement of pressure and temperature. Flamco Group providing range of products on air separators, air vents, expansion vessels, fixing technology products has ISO 9000:2015 certification on design, assembly, commission and supply of sealed system equipment and flue pipe, Supply and assembly of Flamco industrial support systems.

Certificate of Registration



This is to certify that Occupational Health and Safety Management System of

ALI MANEA ALYAMI TRADING EST.

7661-AL KHALIDIYA ASH SHAMALIYAH DISTUNIT NO.3 DAMMAM, SAUDI ARABIA

is in accordance with the requirements of the following standard

ISO 45001:2018

(Occupational Health and Safety Management System)

SCOPE

WHOLESALE & SUPPLY OF HYDRONICS EQUIPMENTS, PRESSURE & TEMPERATURE INSTRUMENTS,
PLUMBING & DRAINAGESPECIALTIES, AIRCUTAINS, FANS, WATER HEATERS, LABELS & TAGS

(IAF CODE - 29)

Certificate Number :100724039623

Initial Registration Date : 10-Jul-2024

1st Surveillance Date : 10-Jun-2025

2nd Surveillance Date : 10-Jun-2026

Certificate Expiry Date : 09-Jul-2027

To verify certificate, visit at :

www.arscert.com

<https://uafaccreditation.org>

<https://www.iafcertsearch.org/>

Issued by ARS Assessment Private Limited


Managing Director



CB MS-3819



UAF Address : 400, North Center Dr, STE 202, Norfolk, VA 23502, United States of America :

This certificate remains the property of ARS and must be returned to ARS on Cancellation or Suspension of the certificate. Validity of the certificate is subject to successful completion of surveillance as said to. Further clarification regarding the scope of this certificate and the applicability of standard may be obtained by consulting the Organisation on info@arscert.com

COMPLETED PROJECTS



SPIMACO

Product Supplied: Flamco Hydronics



CMA Tower

Product Supplied: Winters Instruments Gauges & AGF Valves



CONTACT US

Mohammed Ibrahim

Sr. Tech. Product Engineer

P: +966 54633 4766

E: ibrahim@alyamitech.com

Moideen Suhail

Technical Sales Engineer

P: +966 56292 5237

E: suhail@alyamitech.com

Mohammed Nibraz

Sales Engineer

P: +966 59177 3040

E: nibraz@alyamitech.com

Rishan Ahammed

Sr. Tech. Product Engineer

P: +966 58185 6564

E: rishan@alyamitech.com

Mohammad Shadab

Technical Engineer

P: +966 59 415 8932

E: shadab@alyamitech.com

Kiran K Lal

Senior Technical Engineer

P: +966 53 955 0307

E: kiran@alyamitech.com

Ali Manea Alyami Trading Est

7661-Al Khalidiya Ash Shamaliyah dist, Unit no 3, Dammam, Saudi Arabia Phone: +966 56046 6106

Email: info@alyamitech.com Web: www.alyamitech.com

