

"PREMIUM AND QUICK SOLUTIONS"

COMPANY BROCHURE

Address: 7661-Al Khalidiya Ash Shamaliyah dist Unit no 3 Dammam, Saudi Arabia

Phone: +966 560466106, +966 562925237, +966 546334766

Email: info@alyamitech.com Web: www.alyamitech.com

Index

TABLE OF CONTENT -1

WINTERS INSTRUMENTS PRODUCTS	3
FLAMCO PRODUCTS	5
BELLOWS TECHNOLOGIES PRODUCTS	7
FLOWCONME PRODUCTS	8
SEETRU PRODUCTS	10
ENVOTEC PRODUCTS	11
VIMCO PRODUCTS	12
PROJECT REFERENCES	14

OUR RANGE OF PRODUCTS



Gauges & Instruments products

WINTERS INSTRUMENTS

WINTERS INSTRUMENTS
MANUFACTURER OF INDUSTRIAL INSTRUMENTATION

Winters Instruments is a Canadian based company with line of products in pressure gauges, pressure transmitters, pressure switches, diaphragm seals, thermometers, RTDS, thermocouples, thermometers and thermowells.



PFQ GLYCERIN FILLED GAUGE



PTR TAMPER-RESISTANT GAUGES



SMV MINI BALL VALVE



SSP SYPHON



TAG HVAC THERMOMETERS



TIM SERIES THERMOMETER



TBM BI-METAL THERMOMETER



TIW INDUSTRIAL THERMOWELL



SNV NEEDLE VALVE

Gauges & Instruments products

WINTERS INSTRUMENTS

WINTERS INSTRUMENTS
MANUFACTURER OF INDUSTRIAL INSTRUMENTATION



LE3 GP PRESSURE TRANSMITTER



PPC-PROCESS-GAUGE



TTD TRIDICATOR

Heating, Cooling and System products

FLAMCO GROUP



We're the distributors for Flamco Group products in Saudi Arabia. **Flamco Group** offers products in system components for heating, cooling and potable water installations as well as fixing technologies.



FLAMCO CLEAN SMART



FLAMCOVENT CLEAN SMART



FLAMCOVENT SMART



FLAMCO CLEAN SMART F



FLAMCOVENT CLEAN SMART F



FLAMCOVENT SMART F



FLEXCON M



FLEXVENT PRO



AIRFIX A

NEXUS PICV, FCU-Link & Actuator

FLAMCO



NEXUS PICV

Automatic volumetric flow limiter (Pressure Independent Control Valve (PICV)) for hot and cold circuits. Volumetric flow measurement in Venturi nozzle without stabilising sections. Direct flow rate measurement without entering the pre-settings. Housing of dezincification resistant brass CW602N. Measurement connections: dezincification resistant brass CW602N.

TECHNICAL INFORMATION

- Measuring accuracy: +/- 3%.
- Operating temperature: -20 °C to 120 °C.
- Operating pressure: max 400 kPa.
- Pressure rating: PN 25.
- Connection: Female thread.
- Nominal width: DN 15 - DN 50.



Vivax DN 20 H

FCU-LINK

FCULink is a bespoke system comprising interlinked multi-functional valves and components including a pressure-independent control valve (PICV). These are assembled into a complete unit which allows connection, regulation, isolation and draining for fan coil units used in chilled/hot water piping networks.



FCU-LINK DN155-DN32

NEXUS VALVE VIVAX ACTUATOR

The thermoelectric actuator is used to operate Nexus Valve Vivax DN 15-25 valves. The actuator is controlled by a room thermostat, with two-point output, pulse-width modulation, 0-10V DC signal or a building management system (BMS).

The actuator is provided as normally closed in the following versions:

- Modulating 0-10V DC Signal, 24V AC with 0-10 feedback
- Modulating 0-10V DC Signal, 24V A
- on/off 24V AC/DC
- on/off 230V



Nexus Vivax Actuator

Expansion joints and flexible components

BELLOWS TECHNOLOGY



Bellow Technologies Ltd is United Kingdom based company specializing in manufacturing expansion joints, thermal compensators, flexible components.



RUBBER BELLOWS



TIED LATERAL EXPANSION JOINTS



FLEXIBLE PUMP CONNECTOR



GIMBAL JOINT



**HINGED OR ANGULAR
EXPANSION JOINTS**



**HEAVY WALL & CLAM
SHELL EXPANSION JOINTS**



**SINGLE AXIAL
EXPANSION JOINTS**



**PRESSURE BALANCED
PIPE EXPANSION JOINTS**



**UNIVERSAL
EXPANSION JOINTS**

Actuators, Valves & Flanges

FLOWCONME

flowconME

We're the distributors for FlowconME products in Saudi Arabia. FlowconMe has products in various valves, actuators, WRAS valves, flanges, fittings categories. In addition, we strive to provide any instruments, HVAC products that our customer needs through our suppliers and sourcing partners.



BRONZE CHECK VALVE



BRONZE GATE VALVE NON-RISING
STEM



BRONZE Y-STRAINER



BRASS BIBCOCK WITH
HOSE UNION



DUCTILE IRON
SUCTION DIFFUSER PN-16



DZR BRASS
DRAINING COCK



DUCTILE IRON BUTTERFLY VALVE



CAST IRON GATE VALVE
RISING STEM



DOUBLE SPHERE RUBBER FLEXIBLE
CONNECTOR

FCU Hook Up for PICV System

FLOWCONME



FTFCU-25



INSIDE

MATERIAL SPECIFICATIONS & DIMENSIONS

Sl.	Description	Material
1	Bush	DZR Brass CW602N
2	Gasket	PTFE
3	Handle (Blue)	ALUMINIUM
4	Ball Valve	DZR Brass CW602N
5	Nut	DZR Brass CW602N
6	Female Nipple	DZR Brass CW602N
7	Handle (Black)	ALUMINIUM
8	Connection Piece	DZR Brass CW602N
9	Test Points	DZR Brass CW602N
10	Ball Valve	DZR Brass CW602N
11	Handle (Red)	ALUMINIUM
12	Strainer	DZR Brass CW602N
13	Adaptor	DZR Brass CW602N

DN	A	B	C	D
DN15-DN15 PICV	207	172	106	102
DN20-DN15 PICV	211	185	112	113
DN20-DN20 PICV	229	185	112	113
DN25-DN20 PICV	245	207	128	130
DN25-DN25 PICV	271	207	128	130
DN32-DN32 PICV	323	237	145	155

All dimesnions are nominal.(Indicative)
Actual dimension may vary.

PRESSURE INDEPENDENT BALANCING AND CONTROL VALVE



AB-QM DN 10-250

Connect FCU & Pressure Independent Control Valves

MAPLEF



Maple General Supplier is flow control device manufacturer based in Canada. It makes valves included, gate valves, Double Regulating Valves, Strainers, Check Valves, Butterfly valves, Flexible Connectors, Motorized Butterfly Valves, Pressure Independent Control valves (PICV), automatic balancing valves, FCU connect, Flanges, Fittings and Accessories.

CONNECT FCU PN25

Features:

- It is a ready to install PN25 rated factory pre-assembled and tested valves supplied along with a removable insulation kit.
- 2 P/T Test Point
- Full Insulation
- 2 Stainless Steel Flexible hoses for connections to FCU
- 3 full port Isolation Ball Valves with extended handles for allowances of insulation (1 for supply, 1 for return & 1 for by-pass)
- For control of flow, there are options available: Maplef PICVs or Two Way Control Valves with On/Off+ Double Regulating Valves or Modulating thermic or Mechanical actuators.



MATERIAL SPECIFICATIONS & DIMENSIONS

DN	INCH	L	W	H
15	½"	197	211	117
20	¾"	212.5	233.5	130
25	1"	237	261.5	135.5

All dimensions are indicative.

Actual dimensions may vary.



MAPLEF PRESSURE INDEPENDENT CONTROL VALVES

Available as Maplef Green.0 / Green.1 / Green.2 in size 15-40 mm / 1/2"-1 1/2". The Maplef Green series is a range of pressure independent control valves that are two-way, modulating to accept digital or analog input signals. The valves accept 0(2)-10V, 3-point floating or ON/OFF input signals.



Safety Relief Valves & Pressure Relief Valves

SEETRU

SeetruLimited

The Seetru LGS® Safety Relief Valve range represents state-of-the-art design with dual guided spindle as well as the Seetru Rock-Seal™ seal technology for repeatable high performance sealing. LGS® valves have a robust and reliable construction designed for the widest range of industrial applications.

SEETRU LGS® SAFETY RELIEF VALVE OPEN LEVER/ SEALED CAP

Features:

- Bronze body with dezincification resistant brass wetted parts
- Supplied with Declaration of conformity, EN 10204 3.1
- Test certificate supplied free of charge
- Size range DN15 to DN50 (½" BSP to 2" BSP)
- Designed in accordance with the requirements of BS EN ISO 4126 Part 1
- PTFE or EPDM sealing as standard



FIG 542L PRESSURE RELIEF VALVE

The NABIC Fig 542L is designed primarily for use where high tightness is required on the discharge side. A sealed spring cover prevents the possibility of back pressure leakage through the top of the valve.

Features:

- Resilient PTFE seating design with high degree of seat tightness
- Size Range: DN15 - DN80
- Pressure tight on discharge side
- Pressure setting locked and sealed



**PN16 BRASS CORNER SAFETY VALVE,
SIDE DISCHARGE, THREADED ENDS**



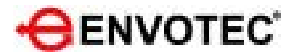
**VALVES WITH THREADED
ENDS VSI90001**



**VALVES WITH THREADED
ENDS VSI90500**

Air Release Valves, Flanges, Expansion Joints

ENVOTEC



Founded in 1991, Envotec design and manufacture dependable plumbing, heating, and industrial flow control products of the highest standards. The company specialize in Control Systems, Interceptors, lead-free plumbing valves, brass valves, flanges, thermostatic mixing valves, and flexible connectors.



**AIR AND VACUUM VALVE
EAL-400**



**AUTOMATIC
AIR RELEASE VALVES EPL 10**



**AUTOMATIC AIR VENT
SERIES E900**



**DIELECTRIC UNIONS
DUFF**



**EREJ-DSF DOUBLE SPHERE FLANGED
RUBBER EXPANSION JOINT**



**SINGLE SPHERE FLANGED
RUBBER EXPANSION JOINT**



**DIELECTRIC FLANGE
PIPE FITTINGS E300**



**DIELECTRIC FLANGE WITHOUT
COMPANION FLANGE**



**STAINLESS STEEL
DIELECTRIC FLANGE E300**

Vibration and Noise Control

VIMCO



Vibration Management Company is an Houston, Texas based company specializing in making vibration and noise control equipments for industrial companies around the world. The product categories include vibration isolators pads, restrained spring mounts, free standing mounts, rubber isolators, expansion joints and more.



**HNSA NEO-SPRING
HANGER**



**VIMCO HOUSED SPRING
MOUNT**



**SEISMIC SPRING
MOUNT-1 DEFLECTION**



**RUBBER-IN-SHEAR DOUBLE
DEFLECTION HANGER**



**80LB FREE
STANDING SPRING MOUNTS**



**ZX AX HOUSED SPRING
MOUNT**



**AVHM ANTI-VIBRATION
HANGER MOUNT**



**VFDC VIBRO-SORB
FLEXIBLE DUCT CONNECTOR**



**VTPT-02
TEST PLUG**

Expansion Joints & Rubber Mounting Pads

VIMCO



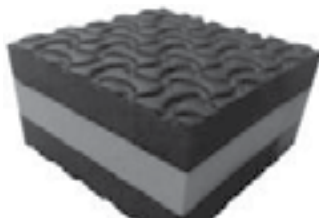
**FCS RUBBER EXPANSION JOINTS,
SINGLE BELLOW CONNECTION**



**FCT-H RUBBER EXPANSION JOINTS,
TWIN BELLOW, FLANGE CONNECTION**



**FCU-T RUBBER EXPANSION JOINTS,
SCREWED CONNECTION**



**3RFP GREEN TRI-
PLE-CORE RUBBER FOAM PAD**



**FMD RUBBER-IN-SHEAR
MOUNT**



**SRMP-XE STEEL-RUB-
BER MOUNTING PAD**



**EASY-CUT RUB-
BER MOUNTING PAD**



**CRU CONTROL ROD
UNIT**



**JF-500-T STAINLESS
STEEL EXPANSION JOINTS**

Residential, Commercial and Industrial Projects

Project References

PROJECT NAME: ICONIC STATION 3B2

PRODUCTS SUPPLIED : WINTERS INSTRUMENTS



PROJECT : RIYADH METRO STATIONS 1A1,1F8,1C1,1B3

PRODUCTS SUPPLIED : WINTERS GAUGES & AGF VALVES



PROJECT : DALLAH HOSPITAL

PRODUCTS SUPPLIED : VIMCO VIBRATION ISOLATORS & WINTERS GAUGES



Residential, Commercial and Industrial Projects

Project References

PROJECT NAME: KING ABDULLAH UNIVERSITY OF SCIENCE AND TECHNOLOGY

PRODUCTS SUPPLIED : WINTERS INSTRUMENTS GAUGES



PROJECT NAME: QASSIM UNIVERSITY

PRODUCTS SUPPLIED : WINTERS INSTRUMENTS GAUGES, ,BELLOWS EXPANSION JOINTS



PROJECT NAME: JABAL OMAR DEVELOPMENT

PRODUCTS SUPPLIED : WINTERS INSTRUMENTS GAUGES

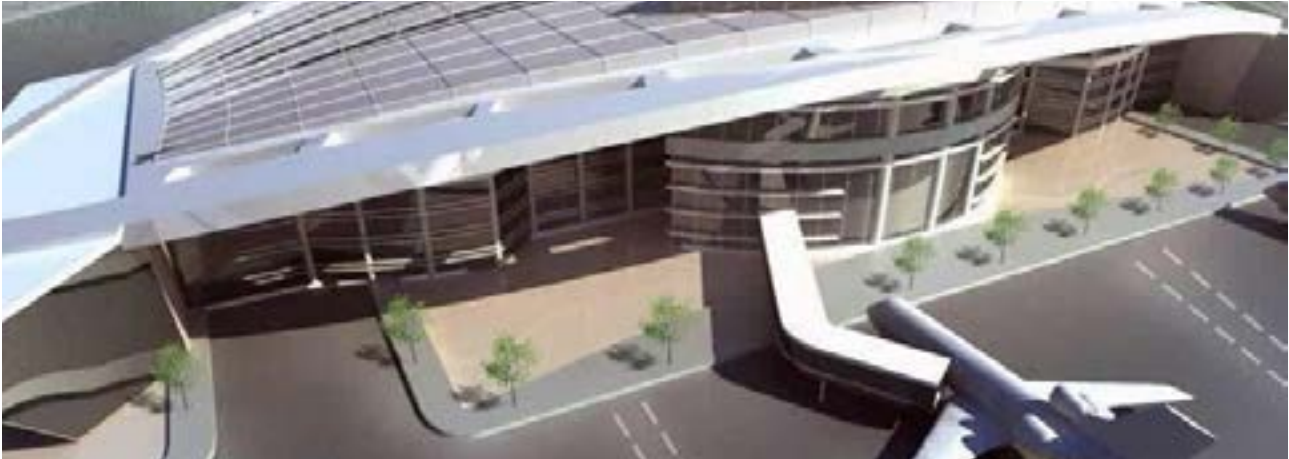


Residential, Commercial and Industrial Projects

Project References

PROJECT NAME: ARAR AIRPORT

PRODUCTS SUPPLIED : WINTERS INSTRUMENTS GAUGES



PROJECT NAME : GRANADA MALL RIYADH

PRODUCTS SUPPLIED : WINTERS INSTRUMENTS GAUGES



PROJECT NAME: SAUDI ELECTRICITY COMPANY HQ

PRODUCTS SUPPLIED : WINTERS INSTRUMENTS GAUGES



Residential, Commercial and Industrial Projects

Project References

PROJECT: SPIMACO

PRODUCTS SUPPLIED : FLAMCO HYDRONICS



PROJECT: CMA TOWER

PRODUCTS SUPPLIED : WINTERS INSTRUMENTS GAUGES



CONTACT US NOW!

Mohammed Ibrahim

Technical Product Engineer

Phone: +966 54633 4766

Email: ibrahim@alyamitech.com

Moideen Suhail

Technical Sales Engineer

Phone: +966 56292 5237

Email: suhail@alyamitech.com

Ali Manea Alyami Est.

7661-Al Khalidiya Ash Shamaliyah dist

Unit no 3, Dammam, Saudi Arabia

Phone: +966 560466106

Email: info@alyamitech.com

Web: www.alyamitech.com

